



# HWC-Series<sup>TM</sup>

Commercial

**The sustainable alternative to conventional water softening treatment.**

UV Guard's HWC-Series is an innovative WaterMark-certified hard water conditioning solution suitable for an extensive range of commercial applications. Unlike conventional water softening processes, the HWC-Series produces soft water whilst requiring no electricity, salts, resins, magnets, backwashing or ongoing maintenance.

## Applications



Agriculture & Irrigation



Aquatics



Drinking Water



Industrial & Manufacturing



Mining



Rainwater



Warm Water & Legionella

## Key Features

- **Installed within existing pipework** – small footprint, no tanks required.
- **100% maintenance and power free** with zero running costs.
- **Easy 24/7 operation** with no backwashing or resin regeneration to interrupt water treatment process.
- **No added salt or other chemicals** means no health concerns or environmental damage due to high salt water content (brine).
- **Vital minerals are maintained in the water**, unlike conventional reverse osmosis (RO) systems.
- **Multiple models** to suit specific hard water conditioning needs and pipework sizes.

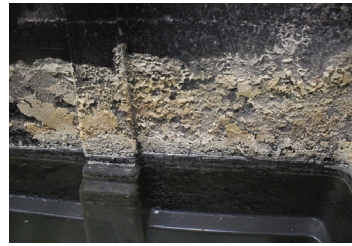
## How it works



- 1 Hard water enters the HWC.
- 2 Water is exposed to the internal surface of the HWC. The integral hydraulic design combined with the chemically-specific material of the conditioner activates an electro-chemical reaction.
- 3 The minerals within the hard water begin to lose their scale producing properties due to changes in their molecular arrangement.
- 4 'Hard' minerals are changed from large molecules to inactive microscopic particles, which flow freely, unable to stick to surfaces and cause scaling.

## Common Commercial Applications

- **Pre-Treatment** – enhancing other water treatment processes (such as UV disinfection)
- **Bore Water** – softening bore water for superior irrigation and/or drinking water
- **Appliances** – maximising the operational life of commercial appliances and equipment
- **Cooling Towers** – preventing scaling and biofilms
- **Mining & Industrial** – reducing maintenance intervals and prolonging the operational life of equipment and components
- **Swimming Pools & Aquatics** – minimising chemical use, removing scale build-up and increasing the life of pool pumps.



## What is 'Hard Water'?

Water hardness is typically caused by dissolved Calcium and Magnesium minerals. High concentrations can lead to issues with limescale and scale deposits. Hard water scaling is a concern across many industries as it can cause damage to UV systems, blockages in pipes, premature appliance or equipment failures, scum rings in public swimming pools, heating element deterioration and other costly problems in commercial situations.

## Models & Specifications

Model	Application / Average Flow Rate	Inlet / Outlet Connections	Material
UVG HWC-0.3	5 Lpm	½" female BSP	316 SS
UVG HWC-0.4	7 Lpm	½" female BSP	316 SS
UVG HWC-0.5	9 Lpm	½" female BSP	316 SS
UVG HWC-0.7	12 Lpm	½" female BSP	316 SS
UVG HWC-1	18 Lpm	¾" female BSP	316 SS
UVG HWC-1P	18 Lpm	¾" BSP PVC Pressure Fitting	PVC
UVG HWC-2	34 Lpm	¾" female BSP	316 SS
UVG HWC-2P	34 Lpm	¾" BSP PVC Pressure Fitting	PVC
UVG HWC-3	56 Lpm	1" female BSP	316 SS
UVG HWC-3P	56 Lpm	¾" BSP PVC Pressure Fitting	PVC
UVG HWC-6	100 Lpm	2" female BSP	316 SS
UVG HWC-13	220 Lpm	2" female BSP	316 SS
UVG HWC-20	335 Lpm	2 ½" Table E Flange	316 SS
UVG HWC-30	500 Lpm	3" Table E Flange	316 SS
UVG HWC-54	900 Lpm	4" Table E Flange	316 SS
UVG HWC-96	1600 Lpm	4 ½" Table E Flange	316 SS
UVG HWC-170	2840 Lpm	5" Table E Flange	316 SS
UVG HWC-240	4000 Lpm	6" Table E Flange	316 SS
UVG HWC-324	5400 Lpm	8" Table E Flange	316 SS
UVG HWC-420	7000 Lpm	10" Table E Flange	316 SS